

# Logic Puzzles

## Sample



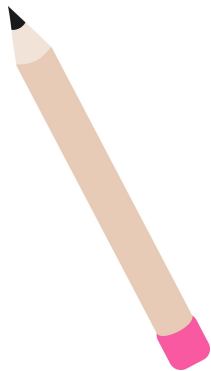
### Directions

These puzzles will encourage your students to think in new ways. They can be completed individually, with a partner, or with a group.

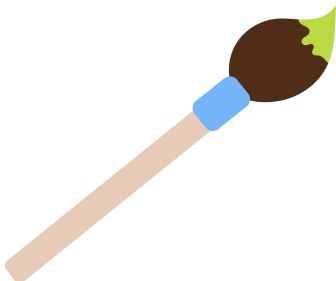
The puzzles get progressively harder. If students are struggling, help them look for clues. Which symbol can you figure out right away? How can you use the value of one symbol to determine the other symbols?

As a last result, give them the value of one of the symbols and have them determine the other two.

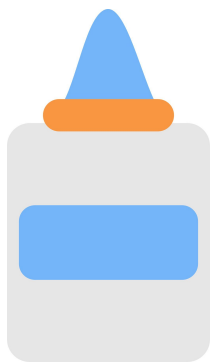
# Puzzle #1



+



= 15

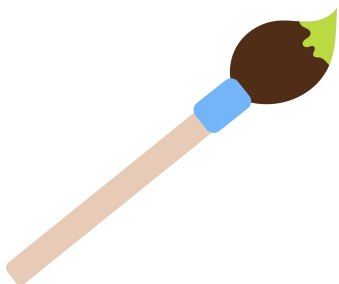


+

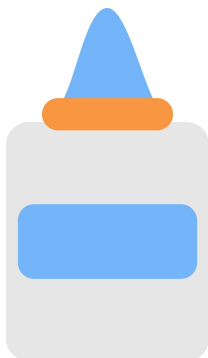
2

=

8

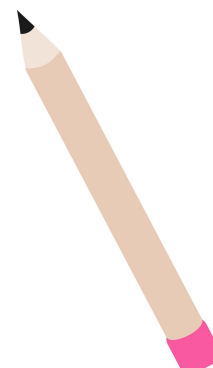
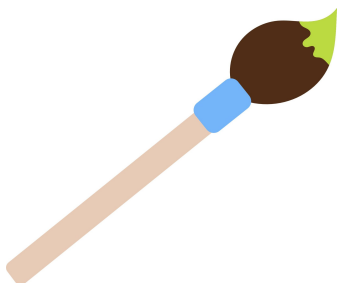


-

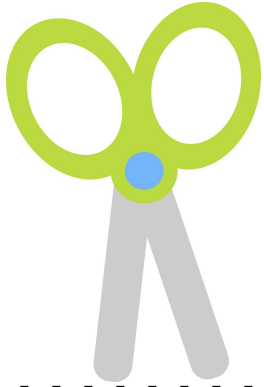


=

7



# Puzzle #2



$$+ 16 =$$



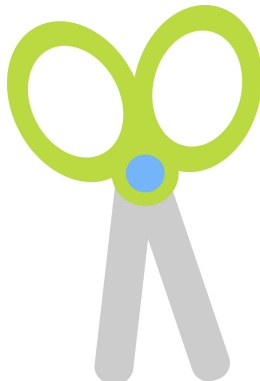
$$- \text{stack of books} = 18$$



$$+$$



$$= 6$$



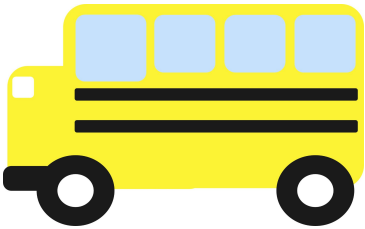
# Puzzle #3



+



= 38



+



= 42



-



= 5



—

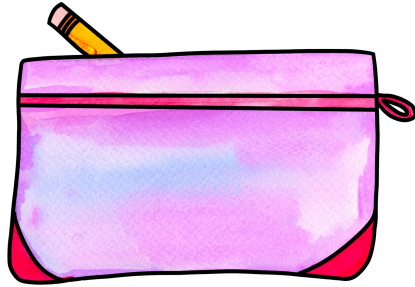
—

—

# Puzzle #4



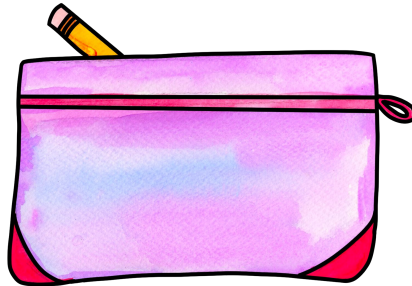
+



= 28



-



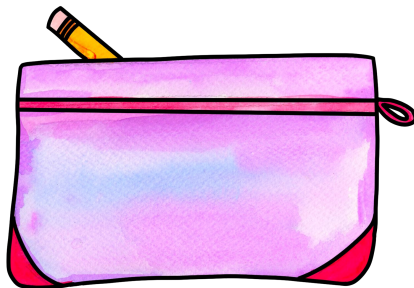
= 3

25

-



= 19



## Puzzle #1

$$\text{pencil} + \text{brush} = 15$$

$$\text{glue} + 2 = 8$$

$$\text{brush} - \text{glue} = 7$$

$$\text{brush} + \text{glue} + \text{pencil} = \underline{\hspace{1cm}}$$

© Enhancing Enrichment

## Puzzle #2

$$\text{scissors} + 16 = \text{blackboard}$$

$$\text{blackboard} - \text{books} = 18$$

$$\text{books} + \text{books} = 6$$

$$\text{blackboard} + \text{scissors} + \text{books} = \underline{\hspace{1cm}}$$

© Enhancing Enrichment

## Puzzle #3

$$\text{house} + \text{house} = 38$$

$$\text{bus} + \text{paint} = 42$$

$$\text{house} - \text{bus} = 5$$

$$\text{house} + \text{paint} + \text{bus} = \underline{\hspace{1cm}}$$

© Enhancing Enrichment

## Puzzle #4

$$\text{backpack} + \text{pencil case} = 28$$

$$\text{laptop} - \text{pencil case} = 3$$

$$25 - \text{laptop} = 19$$

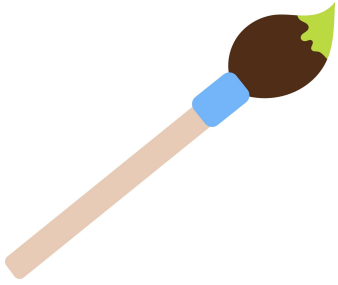
$$\text{backpack} + \text{pencil case} + \text{laptop} = \underline{\hspace{1cm}}$$

© Enhancing Enrichment

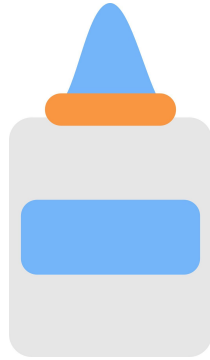
© Enhancing Enrichment

# Answer Key

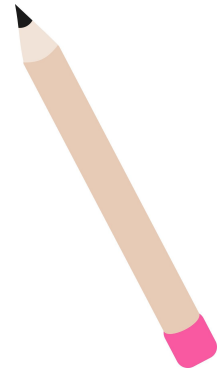
## Puzzle #1



13



6

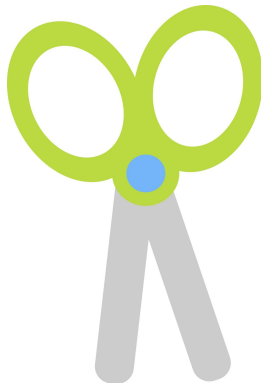


2

## Puzzle #2



21



5



3

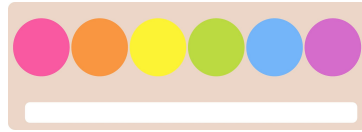


# Answer Key

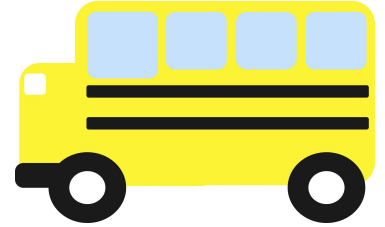
## Puzzle #3



19



28

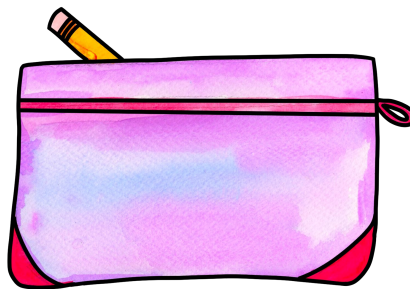


14

## Puzzle #4



25



3



6



# Terms of Use



Thank you so much for your purchase! I hope you enjoy it! As a Talented and Gifted teacher it is my goal to create products that engage and challenge your high ability students. If you have any questions or concerns, please feel free to reach me at [enhancingenrichment@gmail.com](mailto:enhancingenrichment@gmail.com). Please follow <https://www.teacherspayteachers.com/Store/Enhancing-Enrichment> for more products and subscribe to my blog at <https://enhancingenrichment.com/> for ideas on how to use these products.

By purchasing this resource, you are agreeing that all contents of this resource are the property of Enhancing Enrichment and licensed to you only for classroom or personal use. I retain the copyright and reserve all rights to this product.

## You May:

- Use both free and purchased items from **Enhancing Enrichment** with your students in your classroom.
- Use both free and purchased items from **Enhancing Enrichment** for personal use.
- Share this product on social media, at professional development, workshops, blog posts, etc. as long as you give credit to **Enhancing Enrichment**.

## You May Not:

- Claim this work as your own or remove copyright or watermarks.
- Offer this resource/file for sale OR for free.
- Distribute this document to multiple users unless multiple licenses were purchased.
- Post parts or all of this resource on the internet without a direct link to **Enhancing Enrichment**.

Special Thanks to the Following Clip Art Artists:  
Jessica Sawyer Design  
Teallazzo Clipart



# Ready for more math logic puzzles?

## Math Logic Puzzles Bundle

Math Logic Puzzles

Puzzle #1

$1 \times 4 = 4$

Puzzle #2

$64 \div 8 = 8$

Multiplication and Division

Math Logic Puzzles

Puzzle #1

$1 + 2 = 3$

Puzzle #2

$2 + 3 = 5$

Addition and Subtraction

Winter Math Logic Puzzles

Math Logic Puzzles

Puzzle #1

$1 + 2 = 3$

Puzzle #2

$2 + 3 = 5$

Add and Subtract Fractions

Math Logic Puzzles

Puzzle #1

$1 + 2 = 3$

Puzzle #2

$2 + 3 = 5$

Add and Subtract Integers

Math Logic Puzzles

Puzzle #1

$1 + 2 = 3$

Puzzle #2

$2 + 3 = 5$

Add and Subtract Decimals

## Math Logic Puzzles

Puzzle #2

$1 + 2 = 3$

Puzzle #1

$2 + 3 = 5$

Addition and Subtraction

3rd - 5th Grade

## Math Logic Puzzles

Puzzle #1

$1 \times 4 = 4$

Puzzle #7

$64 \div 8 = 8$

Multiplication and Division

3rd - 5th Grade

## Math Logic Puzzles

Puzzle #2

$1 - 2 = -1$

Puzzle #1

$2 + 3 = 5$

Add and Subtract Fractions

4th - 5th Grade

## Math Logic Puzzles

Puzzle #5

$1 + 2 = 3$

Puzzle #1

$2 + 3 = 5$

Add and Subtract Decimals

5th - 6th Grade

## Math Logic Puzzles

Puzzle #1

$1 + 2 = 3$

Puzzle #6

$2 + 3 = 5$

Add and Subtract Integers

6th - 7th Grade

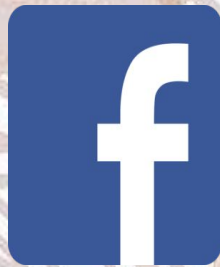


# Let's Stay Connected!

If you like products just like this one, you can find our other products [here](#).



Need help?



To stay in touch with Enhancing Enrichment, make sure to follow our socials.

Want a free product? Click on the image to download our [mobile math puzzles](#).

